

GENERAL NOTES

- PROPOSED SANITARY SEWER LATERAL @ 4\"/>
- FDC CLEARANCE - CLEAR SPACE AROUND FIRE HYDRANTS, FIRE DEPARTMENT CONNECTIONS (FDC), AND ANY OTHER FIRE APPLIANCES REQUIRING CLEARANCE FOR ACCESS. A 36\"/>

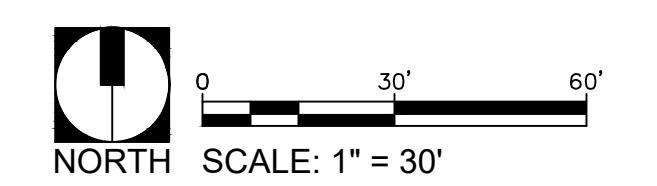
WS KEY NOTES

- PROP 6\"/>
- CONNECT TO EXISTING 6\"/>
- FIRE HYDRANT ASSEMBLY HEIGHT TO BE COORDINATE WITH PROPOSED GRADES. SEE PGD PLAN.

LEGEND

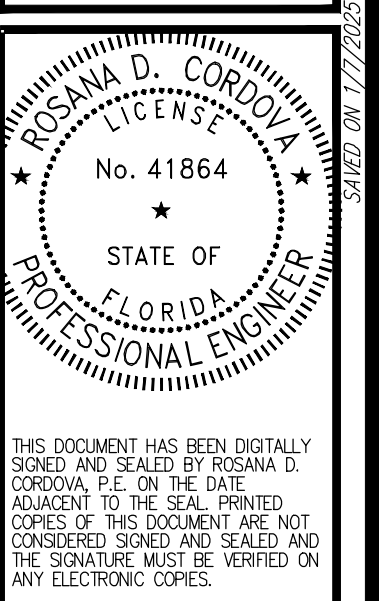
- PROPERTY LINE / ROW
- ////// EXISTING BUILDING / WALL
- - - - EXISTING UTILITY EASEMENT
- EXISTING UTILITY POLE
- ⊙ EXISTING LIGHT POLE
- OH - EXISTING ELECTRIC CABLE
- ⊞ EXISTING CATCH BASIN
- ⊞ EXISTING WATER METER
- ⊞ EXISTING DRAINAGE WELL
- ⊞ EXISTING SAN SEWER MANHOLE
- EXISTING STORM SEWER MANHOLE
- EXISTING ELEVATION
- ⊞ EXISTING FIRE HYDRANT
- ⊞ PROPOSED VALVE & BOX
- ⊞ PROPOSED WATER METER
- ⊞ BACKFLOW PREVENTOR
- ⊞ PROPOSED TEE
- ⊞ PAVEMENT RESTORATION
- ⊞ PROPOSED 45\"/>
- ⊞ PROPOSED FIRE HYDRANT
- ⊞ PROPOSED FDC
- ⊞ PROPOSED DOUBLE DETECTOR CHECK VALVE
- ⊞ PROPOSED 10' EASEMENT

CONCURRENCY TABLE					
PUBLIC FACILITY	USE	OCCUPANCY	UNIT	TOTAL	UNIT
Water	Warehouse @ 0.10 GPD/Square Foot	20,930	sq. ft.	2093.0000	gpd
	Warehouse @ 0.10 GPD/Square Foot				
Sewer	Warehouse @ 0.10 GPD/Square Foot	20,930	sq. ft.	2093.0000	gpd



FOR REVIEW ONLY			DATE
NO.	REVISION		

FIBERBUILT UMBRELLA
2201 WEST ATLANTIC BOULEVARD, POMPAÑO BEACH, FL, 33069
FOR: FIBERBUILT UMBRELLA



WATER AND SEWER PLAN

CORDOVA RODRIGUEZ & ASSOCIATES, INC.
ENGINEERS - PLANNERS
AUTHORIZATION NO. 8459
CORDOVA RODRIGUEZ & ASSOCIATES, INC.
601 W. 10TH AVENUE, SUITE 200
POMPAÑO BEACH, FLORIDA 33062
TEL: (954) 880-0180
FAX: (954) 880-0181
WWW.CORDOVAENGINEERING.COM

DESIGN: OG | CHECKED: RDC
SCALE: 1" = 30'
DATE: 07/30/2024
PROJECT NO. 23.236-01
SHT 08 OF 13
DWG NO. **C301**